



Sheet Metal Cantilever Warehouse Racking H Beam Rack With Powder Coating

Our Product Introduction

for more products please visit us on warehouse-rackings.com

Basic Information

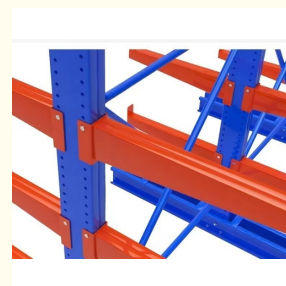
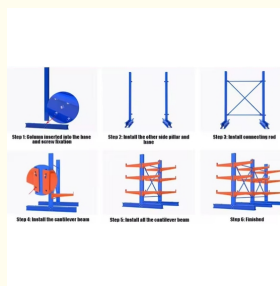


Product Specification

- Model NO.: Cantilever Racks
- Mobility: Adjustable
- Height: 1-15m
- Weight: 100-8000kg
- Closed: Open
- Development: Conventional
- Serviceability: Common Use
- Color: Customized
- Lead Time: 20 Days
- Raw Material: Q235
- Surface Treatment: Powder Coating
- Operation: By Forklift Or Stacker
- Certificate: SGS, ISO
- Feature: Corrosion Protection
- Transport Package: Standard Export



More Images



Product Description

Industrial Warehouse Pipe Sheet Metal Storage Cantilever Racking With Powder Coating

Product Description

Jiangsu Qifei Intelligent Storage Equipment Co., Ltd.



Also called **H beam cantilever rack**, Mainly consists of column, base, arm, straight brace and "X" brace.

Features&Benefits

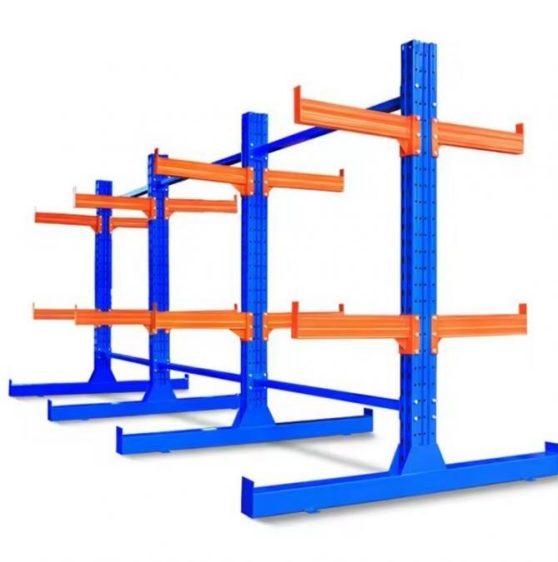
- 1) Simple structure, easy and quick assembled and disassembled
- 2) **Single and double sided** configuration available
- 3) Mainly used for the storage of long stuff such as **rolled section steel, steel tube, plates, wire lines** and so on.
- 4) Bolted arm and base connection
- 5) Made of H type steel or cold rolling steel or frame or square tube
- 6) Loading and unloading of goods can be done manually or by forklifts.
- 7) Selective: direct access to each goods

Material	Q235B
OEM&ODM	Available
Surface Treatment	Galvanized/Powder Coating
Sample	Available

Required information for quote

- 1, The AUTOCAD drawing or draft drawing of warehouse or racking.
- 2, Length, Height, and Width of the warehouse.
- 3, Layers of the racking
- 4, Pallet size.
- 5, Max weight of pallet with cargo on.
- 6, Color requirement.

Detailed Photos





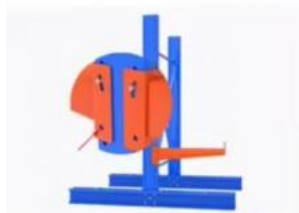
Step 1: Column inserted into the base and screw fixation



Step 2: Install the other side pillar and base



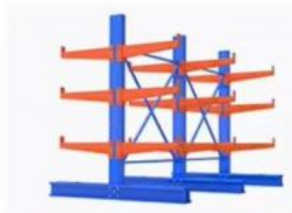
Step 3: Install connecting rod



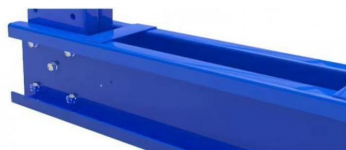
Step 4: Install the cantilever beam



Step 5: Install all the cantilever beam



Step 6: Finished



BASE

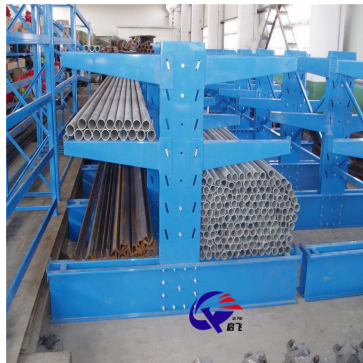


POST



CANTILEVER BEAM

Success Case



Packaging & Shipping





Package for Upright Frame



Package for Beam



Loading for Beam



Loading for Upright Frame



Loading for Wire Mesh Cage

Company Profile

Jiangsu Qifei Intelligent Storage Equipment Co., Ltd



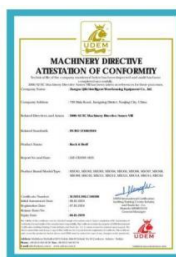
Established in 2020, is one of the leading manufacturer specialized in industrial warehouse storage equipment



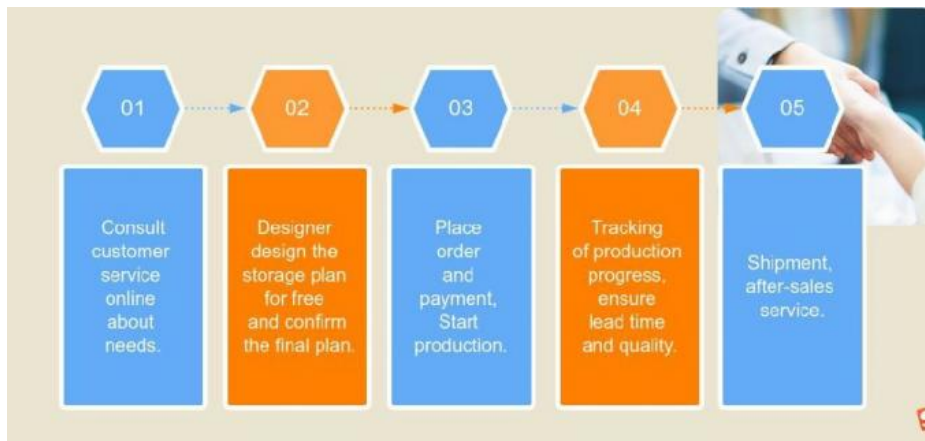
Main products are heavy/medium/light duty rack, cantilever rack, mezzanine floor, drive in rack, and so on.



We aim to provide cost-effective and space utilization storage solutions for all customers worldwide



Co-operation Process



FAQ

Q: Are you manufacturer or trading company?

A: We are experienced manufacturer in the warehouse storage industry.

Q: How is your delivery time?

A: Generally, it is within 20 days against formal order and deposit. It also depends on other factors such as order quantity.

Q: What is the payment term?

A: T/T 30% as deposit, and 70% before delivery. We'll show you the photos of the products and packages before you pay the balance.

Q: What is your terms of delivery?

A: EXW, FOB

Q: Are samples available?

A: Yes, We can supply the sample if we have ready parts in stock, but the customers have to pay the sample cost and the courier cost.

Q: What is the minimum order quantity?

A: Generally, MOQ is 10sets.

Q: Can I make my own brand and designed products?

A: Yes, we do both OEM and ODM, so you can make your own product with your own logo.

Q: Where is your factory? Can I visit it?

A: Our factory located in Nanjing, Welcome to visit our factory. We can arrange pick-up from the airport or train station for you.

Q: I don't have drawing or picture available for the products, could you design it for me?

A: Yes, we can make the best suitable design for you but need to know more details.

Q: Do I get any guarantee from your company?

A: Yes, 3 years warranty

Q: How do you make our business long-term and good relationship?

A: Quality makes trust and reputation, plus competitive price to ensure our customers benefit ;



Jiangsu Qifei Intelligent Storage Equipment Co., Ltd.



+86-15161451461



sharonyan@qifeirack.com



warehouse-rackings.com

Add: #739 Dixiu Road Jiangning District Nanjing China